

FlexConfig Developer

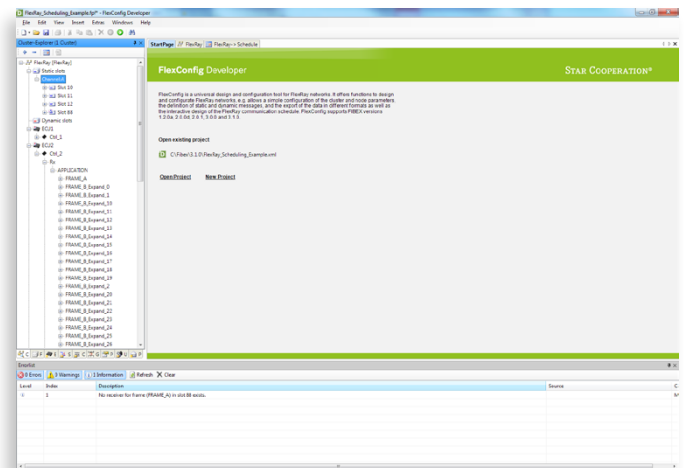
www.star-cooperation.com

BENEFITS

- Easy to use tool to configure FlexRay bus systems
- Provides overview of network topology and data communications, and creates the necessary understanding of the system
- Support of many Communication Controllers from different manufacturers
- Support of the network description formats FIBEX and AUTOSAR
 - FIBEX 2.0.0d, 2.0.1, 3.0.0, 3.1.0, FIBEX+ 1.4
 - AUTOSAR 3.0.2, 3.1.0, 3.1.4.DAI.2, 3.1.4.DAI.4, 3.2.2
- Measuring systems can be configured easily without complex series ECU tools

FLEXCONFIG DEVELOPER – OVERVIEW

FlexConfig Developer is a cost-effective, powerful and user-friendly design and configuration software for automotive networks. New networks are created easily by using wizards. Existing networks are clearly displayed and can be changed easily. With the help of the numerous export options, almost every hardware platform can be configured with the network data.



FlexConfig Developer

FLEXCONFIG DEVELOPER - FIBEX EDITOR

The configuration of the FlexRay bus is described by more than 200 parameters. Plus the descriptions of the messages and signals.

FlexConfig Developer is used to:

- Define the bus architecture
- Define the FlexRay bus parameters
- Define the communication relationships among the bus nodes
- Define the messages and signals

FlexConfig Developer allows you to describe the FlexRay bus through a clearly structured Windows user interface. The file format used is FIBEX, which has become the established format for FlexRay. The FIBEX files can then be exchanged among all the developers who contribute FlexRay nodes. Other formats could also be read and processed, using the conversion functions.

The definition, representation and description of the bus architecture is the typical application from the point of view of an OEM. But suppliers could also need to alter the databases provided by the OEM for test purposes.

ENTRY-LEVEL

Using wizards, even FlexRay beginners and entry-level users can quickly and easily create functioning FlexRay networks. Entry-level users are supported by a special mode, in which only a fraction of the configuration parameters to be configured have to be entered. Missing or interdependent parameters are calculated and validated automatically.

TOOL CHAIN INTEGRATION

The import/export support of the FIBEX data format allows network data to be exchanged with other development tools. User-defined extensions to the FIBEX formats are kept during import/export.

FEATURES

- Overview of network topology and data
- Simple parameterization of the cluster and node parameters
- Visual editors for Cluster, ECU, Controller, Frame, PDU, Signal, Coding and Unit
- Interactive schedule design
- Interactive design of the FlexRay communication
- Configuration wizard which simplifies the input of all necessary FlexRay parameters
- Runtime consistency check of FlexRay configuration parameters
- Verification of FIBEX files
- Automatic and manual message buffer mapping

SUPPORTED FILE FORMATS:

- Native – FIBEX 3.1.0, FIBEX 4.1.1
- With Converters FIBEX
 - 2.0.0d (FIBEX 2.0 to 3.0 Converter Version 3.0.4.0)
 - 2.0.1 (FIBEX 2.0 to 3.0 Converter Version 3.0.4.0)
 - 3.0.0 (FIBEX 3.0.0 to 3.1 Converter Version 3.1.3.0)
 - FIBEX + 1.4 (FIBEX+ to FIBEX 3.0.0 Converter Version 3.0.3.0)
 - FIBEX 4.0/4.1 (FIBEX 4 to FIBEX 4.1.1 Converter Version 1.0.0.0)
- With Converters AUTOSAR (AUTOSAR to FIBEX 3.0 Converter Version 3.1.4.0)
 - 3.0.2
 - 3.1.0
 - 3.1.4
 - 3.1.4.DAI.2
 - 3.1.4.DAI.4(AUTOSAR to FIBEX 4.1.1 Converter Version 1.0.0.0)
 - 4.0.3
 - 4.1.1
 - 4.2.1
 - 4.2.2
- With Converters CANdb (CANdb to FIBEX 2.0.1 /3.0.0 Converter Version 3.2.0.0)

COMMUNICATION CONTROLLER PLUGINS:

- Bosch.ERay.dll (Version 3.2.3.0)
 - Bosch: E-Ray
- FreeScale.MFR4200.dll (Version 3.2.3.0)
 - FreeScale: MFR4200
- FreeScale.MFR43x0.dll (Version 3.2.3.0)
 - FreeScale: MFR4300, MFR4310, MPC5567
- Fujitsu.MB88121.dll (Version 3.2.3.0)
 - Fujitsu: MB88121, MB91F465X
- NEC.V850EPH03.dll (Version 3.2.3.0)
 - NEC: V850E/PH03

SYSTEM REQUIREMENTS

- Hardware
 - CPU 1GHz
 - Disk space 1 GB
 - Display: min. 1024*768 High Color (16-Bit)
- Software
 - Windows 7 (32/64-Bit)
 - Microsoft .NET Framework 4.0
 - Internet Explorer 6 or higher
 - Windows Installer 3.1 or higher
- .NET Framework 4.0
 - Minimum disk space 1 GB (.NET plus application)
 - Minimum RAM size 512 MB
 - CPU 1GHz

ORDER INFORMATION FLEXCONFIG DEVELOPER

FlexConfig Developer Local	3-V0160D01
FlexConfig Developer Floating	3-V0160F01